



Niagara Classic Road Race

Ontario Cup #5

Sunday May 18, 2013

Technical Guide

Rev. 0 (8 April, 2014)



General Information

COURSE: The course from last year is being used with the neutral rollout staged near the parking facilities on Metler Road. On the last lap only, the race will turn left before the steep section of Effingham St. and finish on Metler Rd just over 1/2 km from the corner.

PARKING: Parking is at Bissell's Hideaway (205 Metler Rd Pelham, ON L0S 1M0). Please look at the maps in this tech guide and make sure not to drive on course against the race direction. Plan to arrive via Hwy 20 -> Haist St -> Metler Rd or southbound on Effingham (in the same direction as the race). Expect short delays due to race traffic and respect directions given by police or race volunteers.

PRE-RIDING: Any riders who visit the course to train on the surrounding roads are urged to obey ALL traffic rules and signs. Do NOT litter please, when it comes to your gel packs, etc.

WARMING UP: No race day warm ups on the course. Riders can warm up on non-race roads such as Metler, Haist and Hansler with care.

QUESTIONS: Read the full guide before arriving. Direct questions to Race Director Jeff Moote at jeff.moote@gmail.com

Registration

Sign-on is located near the parking area and neutral start staging location at the entrance of Bissells Hideaway. Please check the schedule and sign-on at the appropriate time.

Entry fees (includes online processing fees):

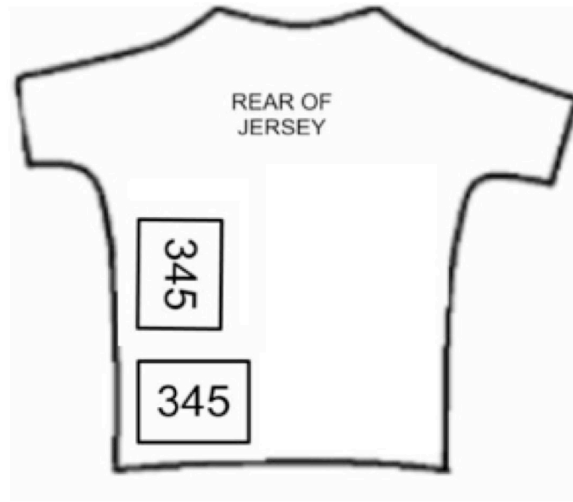
Category	Entry Fee
U19 Men	\$30.00
U19 Women	\$30.00
Elite 1/2 Women	\$65.00
Elite 3 Women	\$65.00
Master A/B/C Women	\$65.00
Elite 1/2 Men	\$65.00
Elite 3 Men	\$65.00
Elite 4 Men	\$65.00
Master 1 Men	\$65.00
Master 2 Men	\$65.00
Master 3 Men	\$65.00

NOTE: One-Day Permits are NOT available at Ontario Cup races.

Register at ontariocycling.org by midnight May 15, 2014. UCI licence is required. No one-day permits accepted for this Ontario Cup Race. US Domestic Licences not accepted at any Ontario events. US riders require a UCI international licence to participate in any Ontario events.

Day of registration fees are \$40 for U19 Men and Women, \$80 for all others and are cash only.

Number Placement



Schedule

Category	Registration	Start Time	Distance	Laps
Master 3 Men Elite 4 Men	7:15-8:00 am	8:30 am 8:33 am	62 km	5
U19 Women Elite 3 Women Master Women	7:15-8:00 am	08:35:00	49.6 km	4
U19 Men Elite 3 Men	8:45-10:30 am	11:00 am	74.4 km	6*
Master 2 Men	8:45-10:30 am	11:05 am	74.4 km	6*
Elite 1/2 Women	8:45-10:30 am	11:08 am	62 km	5*
Elite 1/2 Men	11:15-1:00 pm	1:30 pm	124 km	10**
Master 1 Men	11:15-1:00 pm	1:35 pm	99.2 km	8***

Feed Zone:

The feed zone is located on Effingham St at Metler Rd. and is open during the following laps:

*U19 Men, Elite 3 Men, Master 2 Men, Elite 1/2 Women: end of lap 4 only

**Elite 1/2 Men: laps 4, 5, 6, 7, 8

***Master 1 Men: laps 4, 5, 6

Prizes

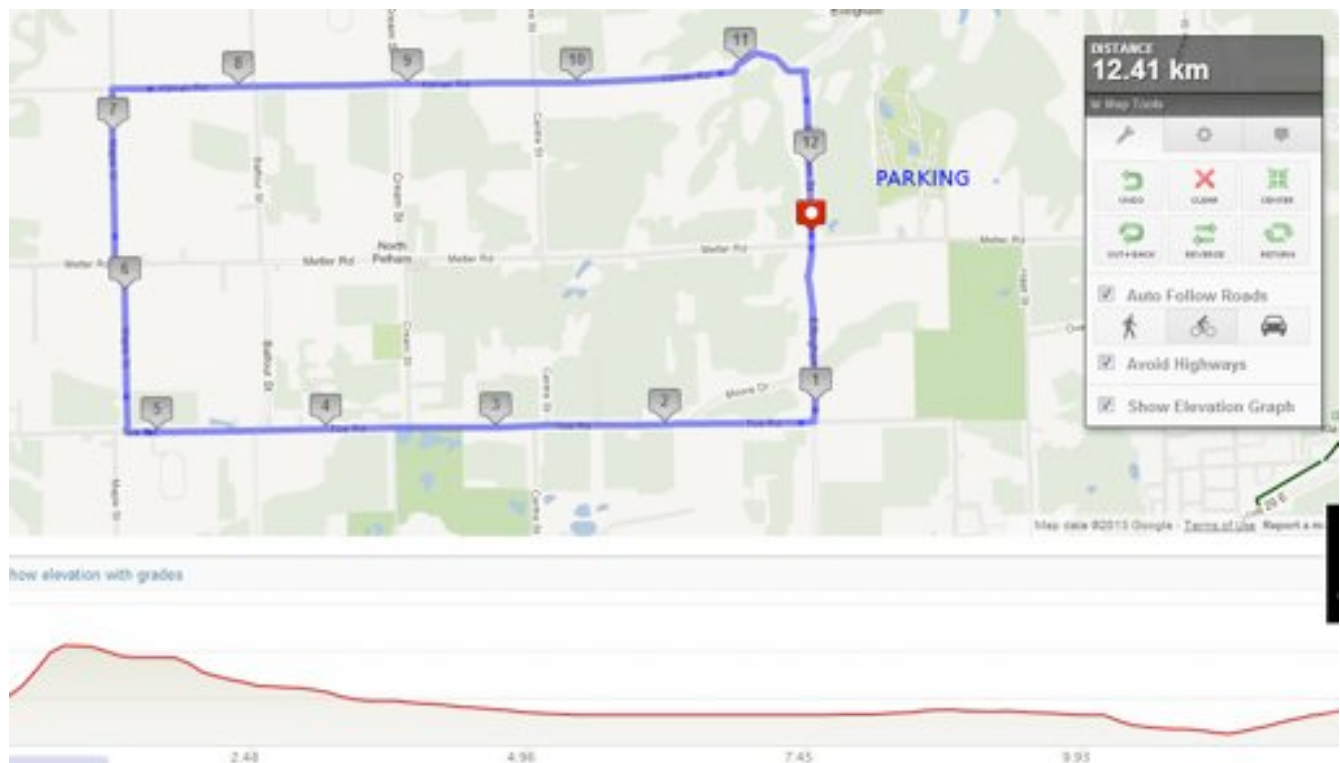
Total purse of **\$5000 in cash** projected based on 400 riders. **Top Elite 1/2 Men and Women pay equally.**

Elite 4 Men:	Medals / top 3
Master 3 Men:	Medals / top 3
Elite 3, Master, Junior Women:	Medals / top 3
Elite 3, Junior Men:	\$300 / top 5 with an additional \$150 for top 3 Juniors
Master 2 Men:	\$300 / top 5
Elite 1/2 Women:	\$1500 / top 10 (top 5 if less than 15 riders)
Elite 1/2 Men:	\$1750 / top 15 (top 10 if less than 30 riders)
Master 1 Men:	\$1000 / top 9

NOTE: Actual prize money depends on registration numbers but this is a best estimate. The prize list will be displayed at registration on race day.

Course Map and Profile

Main Race Loop:



Road Closures:

This is NOT a closed race course, however police will control traffic travelling on Effingham St particularly during race finishes.

The race will have full use of Metler Road during the neutral start and finish. Once the race turns on to Effingham St. the yellow line rule applies. You do not have the full road climbing the hill on Effingham on any lap as this is not the finish as in previous years.

When the race approaches Effingham St heading East on Kilman Rd, traffic will be prevented from heading West on Kilman from Effingham for safety since there is a sequence of blind corners. You must obey the directions of police and race officials and do not abuse the fact that there is no centre line painted on Kilman. Officials **will** be enforcing the yellow line rule.

Start/Finish Detail and Parking Location:



Please note the location of parking and staging for the race start. Plan to arrive via Hwy 20 -> Haist St -> Metler Rd or southbound on Effingham (in the same direction as the race). Expect short delays due to race traffic and respect directions given by police or race volunteers.

Race Rules

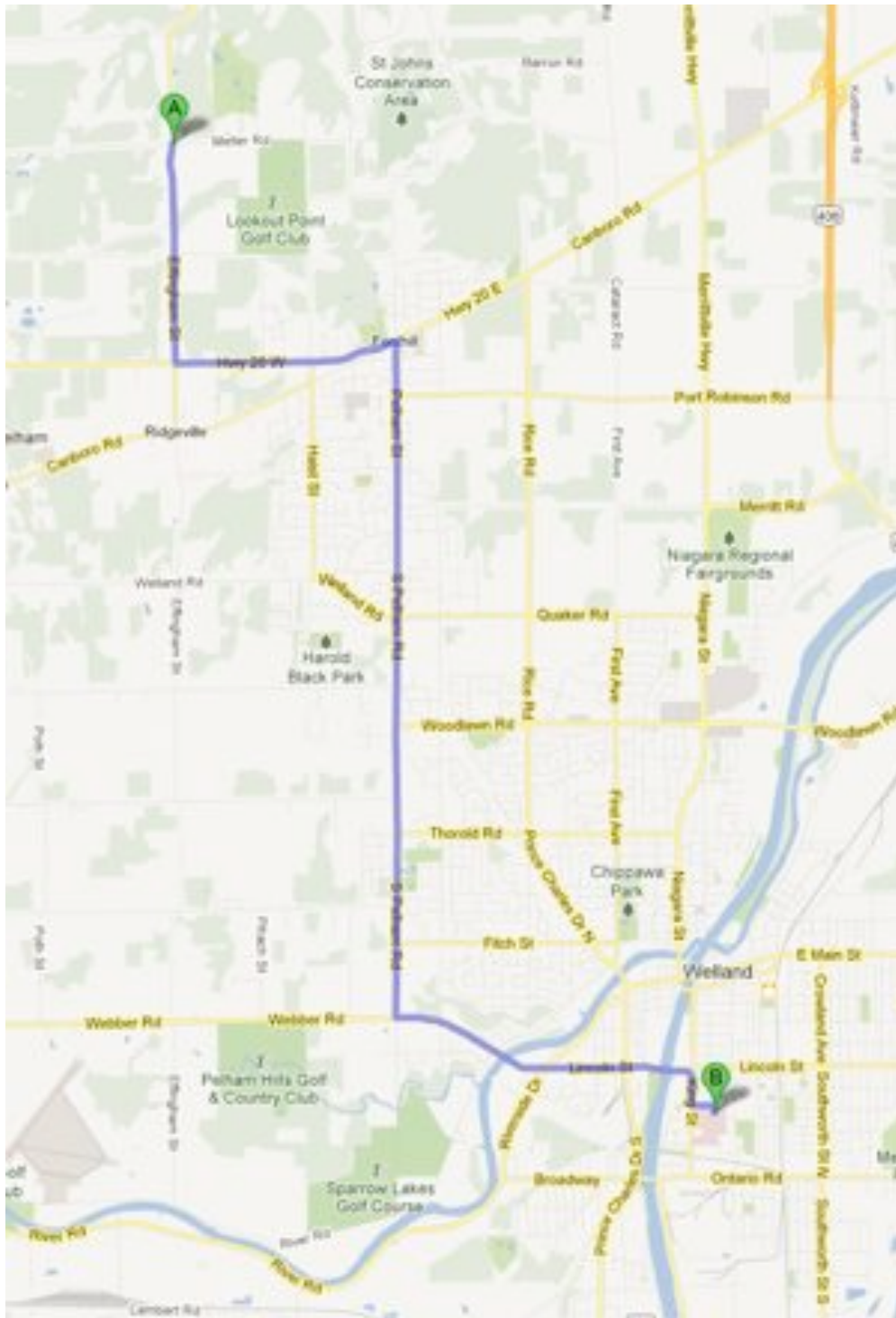
- ⤴ Rider number placement is rear left and side left
- ⤴ Yellow Line Rule will be strictly enforced.
- ⤴ Riders will be required to stay to the right of the centre of the road when there is no yellow line.
- ⤴ Find CCA/OCA rules online at <http://www.ontariocycling.org/commissaires/commissaires-rules>. The penalty scale of the OCA rulebook will apply.
- ⤴ An OCA representative will be present at the race to assist with rider licensing issues. One-Event Racing Permits will not be available. There are no plans to sell UCI licenses on race day. Contact the OCA regarding any licensing questions.
- ⤴ Races will start promptly at the indicated start times.
- ⤴ Team vehicles will not be permitted on the course for any event. Only race organization vehicles are allowed on the race course during competition. All other vehicles /team vehicles are not permitted to follow the races while in progress.
- ⤴ Any rider dropping out of the race shall immediately notify a Commissaire.
- ⤴ There are no free laps for mishaps (e.g. crashes and punctures). Riders suffering mishaps will be serviced from the service vehicles and must continue the race from the point of the mishap
- ⤴ In the event of a mishap, riders are strictly forbidden from drafting behind vehicles for lengthy periods in attempting to catch up to their group. Such drafting may result in disqualification. In cases where more than one group is on the course at the same time, riders must remain separate when overtaking or being overtaken by riders from other groups.
- ⤴ Lapped riders may be pulled at the order of the Commissaires, either after being overtaken or just before being overtaken. Otherwise, lapped riders must remain separate, even when being overtaken by riders in their own category.
- ⤴ Riders who are dropped from the main bunch must proceed at their own risk and shall always ride on the right side of the road with the flow of traffic
- ⤴ Radio communication is not permitted between riders and anyone else. All riders within a category will finish on the same lap. Therefore, lapped riders will complete fewer laps than the winner
- ⤴ The prize list will be displayed at registration. Additional prizes may be announced on the start line.
- ⤴ Results will be posted promptly after each race near registration. After posting, all protests must be communicated to the Chief Commissaire within 15 minutes. If there are no protests within 15 minutes, the results shall be considered final.
- ⤴ Top 3 finishers are required to attend award presentations or risk forfeiting their awards. Top 3 finishers will wear clean competition uniforms for the presentation.
- ⤴ If you drop out of a race and do not report it to a Commissaire you will be considered an Unreported DNF and **will be assessed a penalty**.
- ⤴ In case of lightning, the race may be delayed or cancelled. If you are informed that the race has been stopped due to lightning, you are advised to seek shelter until the race can resume. **There are no refunds if the race must be cancelled for any reason, including disqualification.**
- ⤴ Gear restrictions will be enforced for U19 riders.
- ⤴ All riders must sign on at registration.
- ⤴ U.S. Domestic Licences will no longer be accepted at any Ontario events. US riders will require a UCI international licence to participate in any Ontario events. All foreign licensed riders other than U.S. riders must produce a letter of permission from their country's federation.

Equipment Rules

- ⤴ UCI Rule 1.3.018: Only wheel designs granted prior approval by the UCI may be used. Consult the list of approved non-traditional wheels at www.uci.ch/english/about/wheels.html.
- ⤴ Only standard handlebars are permitted. Handlebar extensions, including time-trial bar extensions or other types of tri-bars, are not permitted.
- ⤴ Only bicycles conforming to UCI rules 1.3.001 - 1.3.025 are permitted for use.
- ⤴ Riders are required to wear jerseys corresponding to the club or team printed on their licence. Independent riders are required to wear plain-coloured jerseys with no significant logos, team names or advertising displayed on them. Sportif riders are exempt from this rule. Sleeveless jerseys are not permitted.
- ⤴ Riders will be issued numbers free of charge at sign in / registration, please ensure they are positioned as per the "Number Placement" section of this document.
- ⤴ Neutral service vehicles will be supplied by the organization and assigned to follow every race. Riders are encouraged to bring their own spare wheels to be placed in the service vehicles before the start of their race. Wheels must be clearly marked with the rider's number or with the rider's team name if it is intended for use by any member of a particular team. Although efforts will be made to provide a rider's own spare wheels in the event of a mishap, in the interests of servicing a rider quickly, service vehicles may supply wheels at random. The organization is not responsible for damage to wheels, even resulting from use by other riders.
- ⤴ Per CCA rule 1.3.031 N) At all times when participating in or preparing for an event held in Canada, all licensees who are mounted on a bicycle shall wear a securely fastened helmet that meets a recognized cycling standard for the specific discipline. Riders shall provide documented proof of this, such as a manufacturer's label, upon request by event officials
- ⤴ Gear restrictions will be in effect for all Under-19 riders including those racing as Elites.
- ⤴ The use of glass containers is strictly prohibited during the race.

Medical Aid

Welland County General Hospital: 65 Third St, Welland, ON L3B 4W6 (905) 378-4647

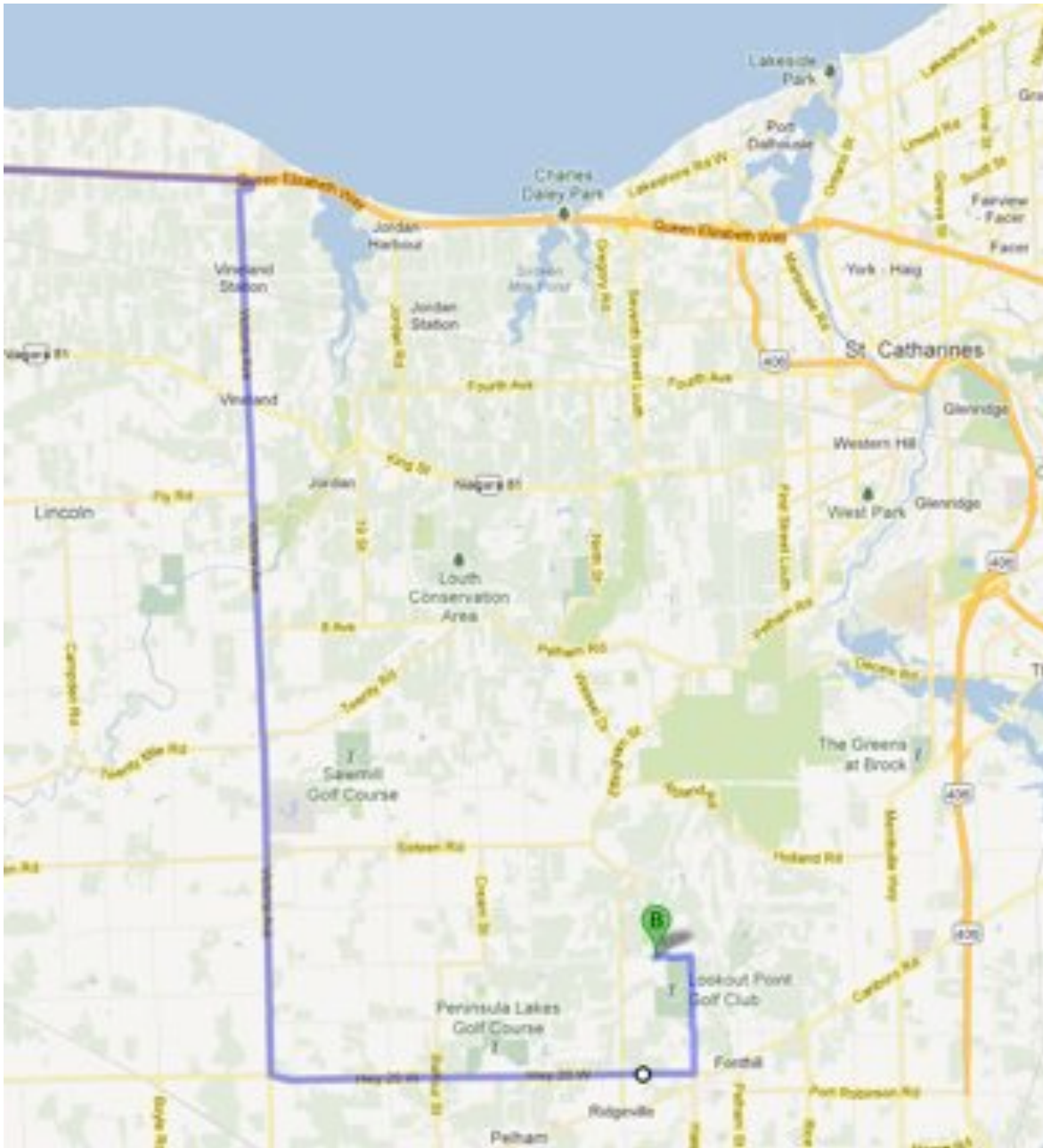


Directions: Effingham St to Hwy 20. East to Pelham St. Turn right (South) on Pelham St. which becomes South Pelham Rd. Turn left (East) on Webber Rd. which becomes Lincoln St. Turn right (South) on King St. Turn left (East) onto Third Street and enter Hospital at 65 Third St.

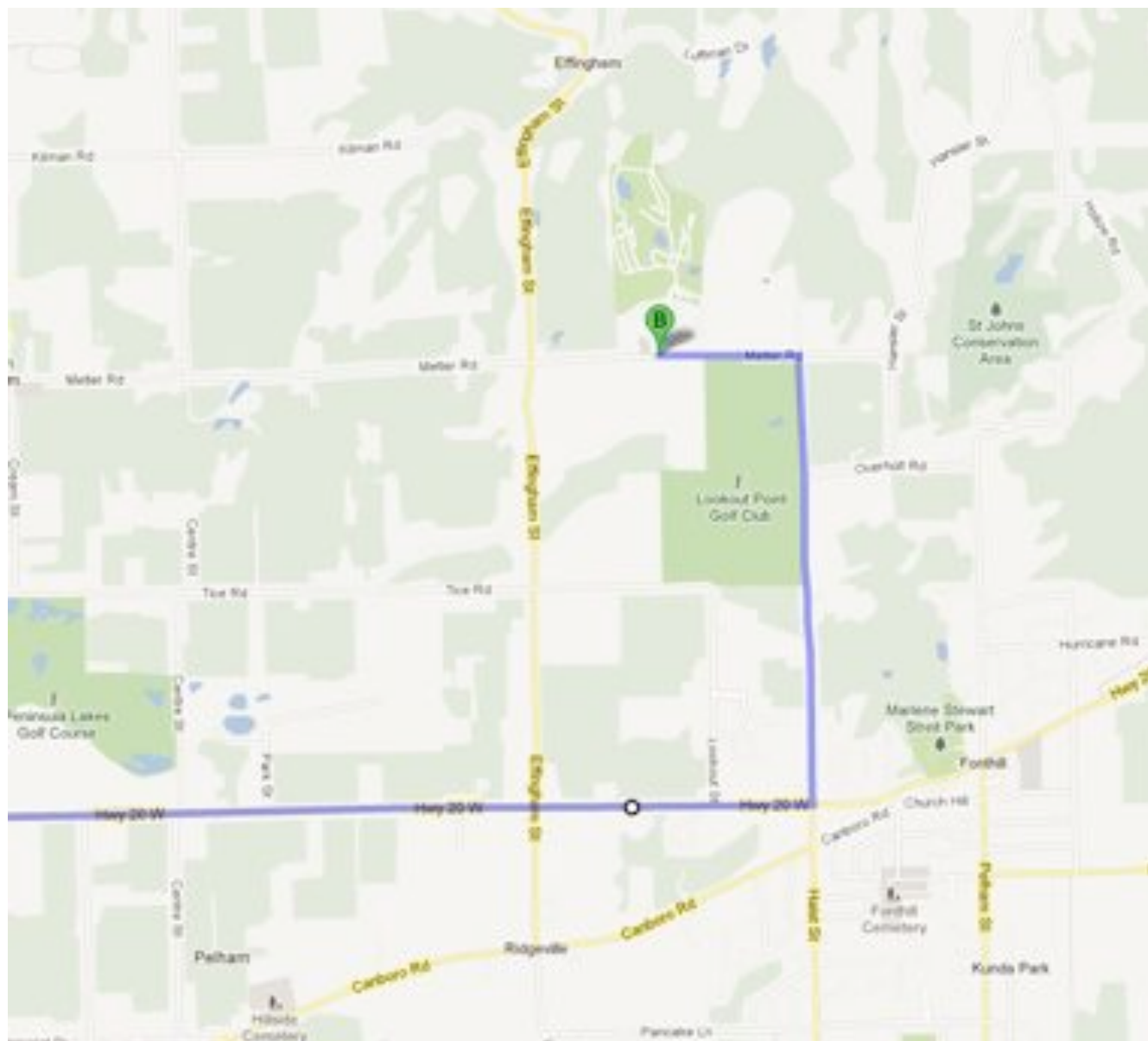
Directions to Race

From GTA/Hamilton

1. Take Queen Elizabeth Way toward Niagara
2. Take exit 57 for Victoria Avenue/County Road 24 toward Vineland
3. Merge onto Marina Blvd
4. Turn left onto Victoria Ave (signs for County Road 24 S/Victoria Avenue S/Vineland/North Service Road)
5. Turn left onto RR 20 E (Highway 20)
6. Turn left onto Haist St
7. Turn left onto Metler Rd
8. Race parking will be on the right



Directions (detail)



Accommodations

Bissell's Hideaway Resort offers camping, cottages and cabins for rent. Anyone mentioning that they are staying for the race will receive a 50% discount on race weekend. The resort also features a Water Park and Fun Park and is very family friendly.

For more information contact:

Bissell's Hideaway, 205 Metler Rd Pelham, ON L0S 1M0

905-892-5706 / 888-236-0619 / www.bissellshideaway.com

For hotels in St. Catharines, Heart of Niagara Hotels has multiple options. For booking, use the following links:

Days Inn: 89 Meadowvale Drive St. Catharines Ontario L2N 3Z8 Toll-Free: 1-888-440-4023

Holiday Inn: 327 Ontario Street St. Catharines Ontario L2R 5L3 Toll-Free: 1-888-440-4023

Best Western: 2 North Service Road St. Catharines Ontario L2N 4G9 Toll-Free: 1-888-440-4023

Sponsors

Thank you to the following generous businesses who support the Niagara Classic and cycling in Niagara:

